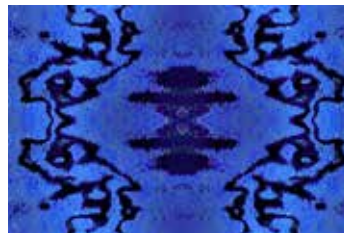


Golden Hour

BY SAQA



Twilight quilt designed
by: **Lonni Rossi**
Quilt Size: **54" x 54"**
andoverfabrics.com



andover



makower uk
The Henley Studio

Free Pattern Download Available

1384 Broadway New York, NY 10018
Tel. (800) 223-5678 • andoverfabrics.com

Twilight



Introducing Andover Fabrics new collection:
GOLDEN HOUR by SAQA (Studio Art Quilt Associates)
Quilt designed by Lonni Rossi

Quilt finishes 54" x 54"

36 Blocks: 9" x 9"

Bold and contemporary, this quilt is full of the colors that light up a glorious sunset. Unusual prints make the unique setting even more interesting. The maker challenges you to experiment with design by changing the placement of the blocks.

Cutting Directions

Note: Read assembly directions before cutting patches. All measurements are cut sizes and include 1/4" seam allowances. A fat 1/8 is a 9" x 21"-22" cut of fabric. A fat 1/4 is an 18" x 20"-22" cut. WOF designates the width of fabric from selvedge to selvedge (approximately 42" wide).

You can follow the layout as shown in the diagrams and quilt photo, or you can create your own composition. Mix it up, change it up, and make it work for your personal color and design sensibilities. To make it even more your own, change the number you make of each block. Simply follow the block diagrams and cut patches in your color choices (fat 1/8's and fat 1/4 fabrics are generous). Make a total of 36 blocks (including the Fabric J 9 1/2" squares). These cutting directions are for the quilt as shown.

Fabric A Cut (2) rectangles 3 1/2" x 9 1/2"
Cut (1) square 3 1/2" x 3 1/2"

Fabric B Cut (2) rectangles 3 1/2" x 9 1/2"
Cut (2) squares 3 1/2" x 3 1/2"

Fabric C Cut (1) rectangle 6 1/2" x 9 1/2"
Cut (1) rectangle 3 1/2" x 6 1/2"
Cut (2) squares 3 1/2" x 3 1/2"

Fabric D Cut (3) squares 3 1/2" x 3 1/2"

Fabric E Cut (3) squares 3 1/2" x 3 1/2"

Fabric Requirements

		Yardage	Fabric
Fabric A	blocks	fat 1/4 yard	119-CO
Fabric B	blocks	fat 1/8 yard	117-R
*Fabric C	blocks	fat 1/8 yard	123-OB
Fabric D	blocks	fat 1/8 yard	116-O
Fabric E	blocks	fat 1/8 yard	118-BY
Fabric F	blocks	fat 1/8 yard	124-P
Fabric G	blocks	fat 1/4 yard	122-YG
Fabric H	blocks	fat 1/8 yard	120-B
Fabric I	blocks	fat 1/8 yard	121-YO
Fabric J	blocks	2 1/2 yards	1867-MC
Fabric K	blocks	fat 1/8 yard	1867-ML
Fabric L	blocks, binding	3/4 yard	1867-N22
*Backing		3 3/4 yards	123-OB

Fabric F Cut (1) rectangle 6 1/2" x 9 1/2"
Cut (1) rectangle 3 1/2" x 6 1/2"
Cut (2) squares 3 1/2" x 3 1/2"

Fabric G Cut (1) rectangle 6 1/2" x 9 1/2"
Cut (1) rectangle 3 1/2" x 6 1/2"
Cut (1) square 3 1/2" x 3 1/2"

Fabric H Cut (1) rectangle 3 1/2" x 6 1/2"
Cut (2) squares 3 1/2" x 3 1/2"

Fabric I Cut (2) squares 3 1/2" x 3 1/2"

Fabric J Cut (10) squares 9 1/2" x 9 1/2"
Cut (19) rectangles 6 1/2" x 9 1/2"
Cut (8) rectangles 3 1/2" x 9 1/2"
Cut (6) rectangles 3 1/2" x 6 1/2"
Cut (4) squares 3 1/2" x 3 1/2"
Cut (4) strips 1 3/4" x 9 1/2"
Cut (4) strips 1 1/4" x 9 1/2"
Cut (6) strips 1 1/4" x 7"

Fabric K Cut (6) strips 1 1/4" x 16"

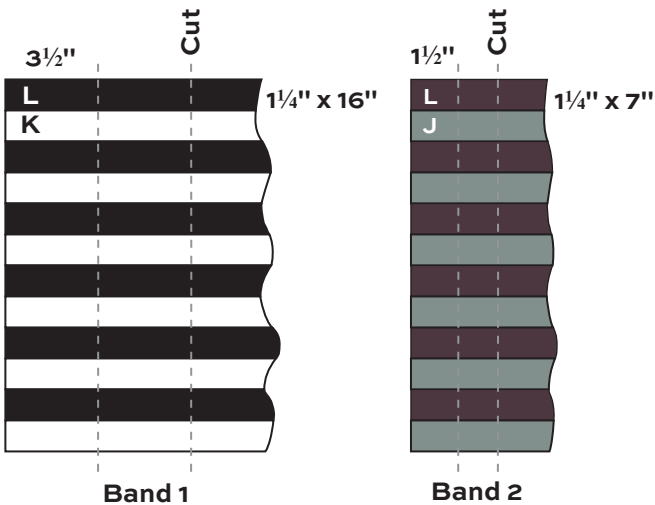
Fabric L Cut (6) strips 2 1/2" x WOF for binding
Cut (6) strips 1 1/4" x 16"
Cut (6) strips 1 1/4" x 7"

Backing Cut (2) panels 32" x 62", pieced to fit quilt top with overlap on all sides

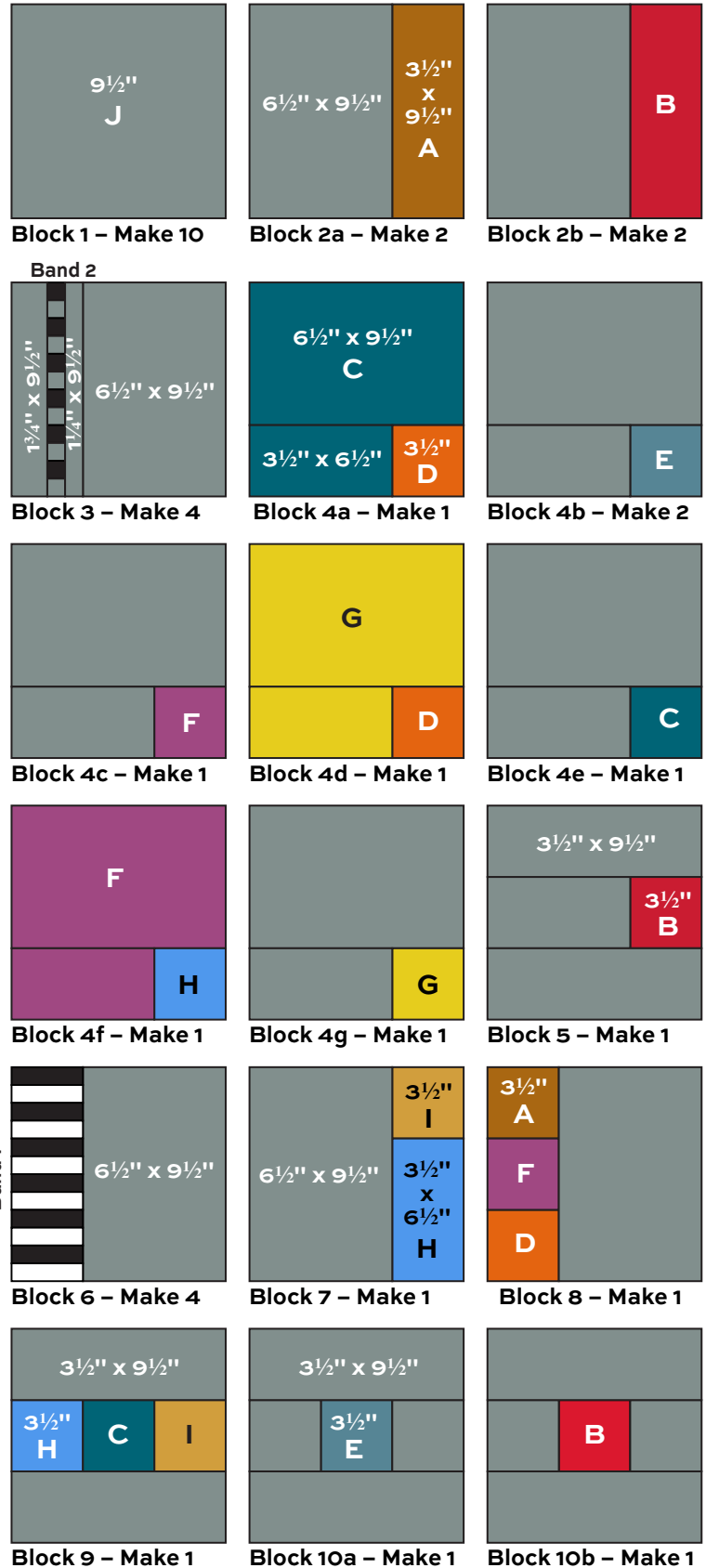
Twilight Quilt

Making the Quilt

- Referring to Band 1 diagram, sew 6 Fabric K alternately with 6 Fabric L $1\frac{1}{4}$ " x 16" strips to make a pieced band, taking *scant* $\frac{1}{4}$ " seams. Press seam allowances in one direction. The band should measure $9\frac{1}{2}$ " from edge to edge. Cut 4 segments from the band that each measure $3\frac{1}{2}$ " wide. Save these segments for Block 6.



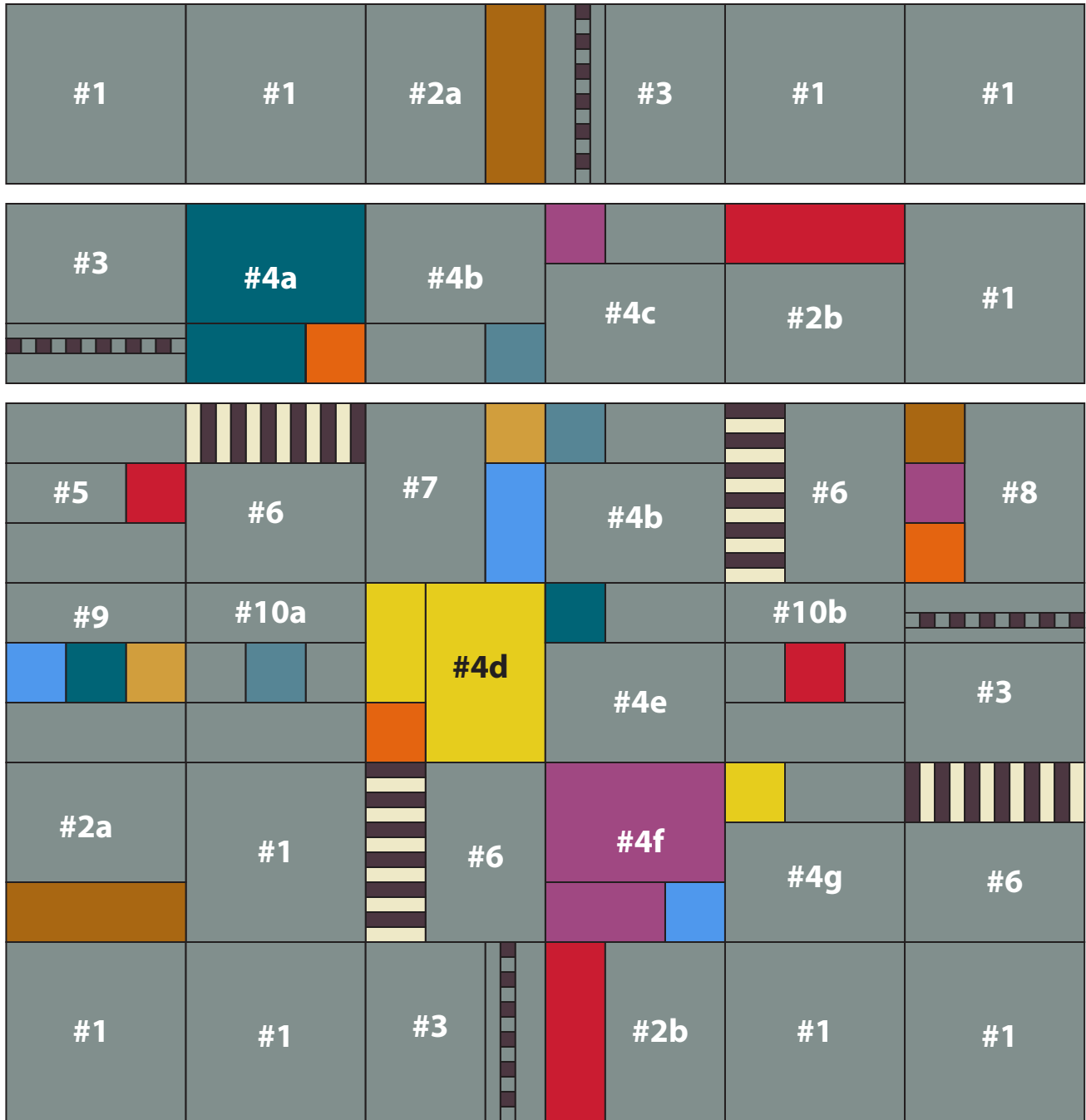
- Likewise, make a pieced band with 6 Fabric J $1\frac{1}{4}$ " x 7" strips and 6 Fabric L strips (Band 2). The band should measure $9\frac{1}{2}$ " across. Cut 4 segments that each measure $1\frac{1}{2}$ " wide. Save these segments for Block 3.
- Referring to the Block Diagrams, join patches to make the number of blocks shown, or make more of the ones you like the most. Change colors around as you wish. Make a total of 36 blocks (including Fabric J $9\frac{1}{2}$ " squares).
- Referring to the Quilt Diagram, arrange the blocks into 6 rows of 6 blocks in each row. Rotate the blocks as shown to make the overall design, or arrange the blocks as you desire. Once you are satisfied with your design, join the blocks into rows. Join the rows.



Twilight Quilt

Finishing the Quilt

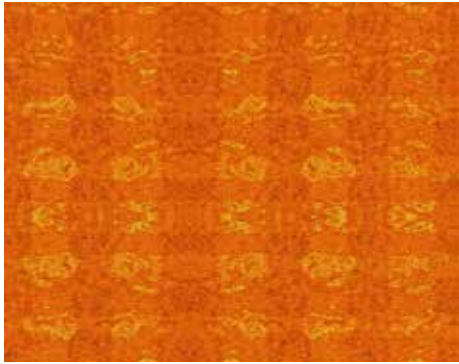
5. Layer the quilt with batting and backing and baste. Quilt vertical lines spaced 1/2" apart. Quilt horizontal lines as you wish. Experiment with using fancy threads and couching with metallic thread or satin cord. Bind to finish the quilt.



Quilt Diagram

Golden Hour

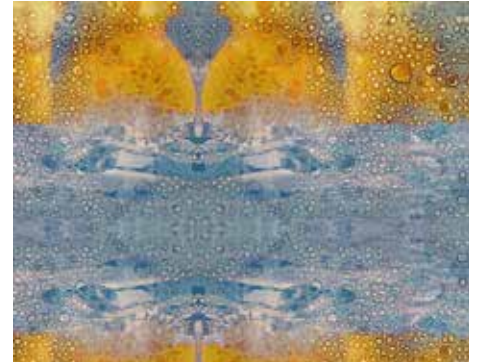
BY SAQA (Studio Art Quilt Associates)



116-O



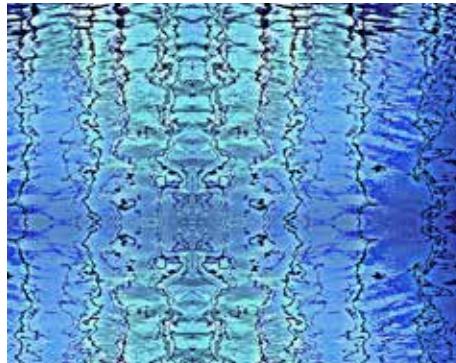
117-R



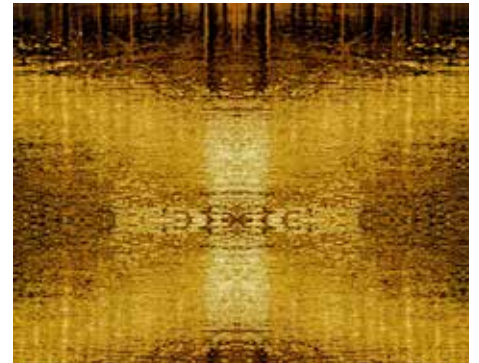
118-BY



119-CO



120-B



121-YO



122-YG



123-OB



124-P



1867-MC



1867-ML



1867-N22

All fabrics are used in quilt pattern.
Fabrics shown are 10% of actual size.

andover



makower uk
The Henley Studio

Free Pattern Download Available

1384 Broadway New York, NY 10018
Tel. (800) 223-5678 • andoverfabrics.com